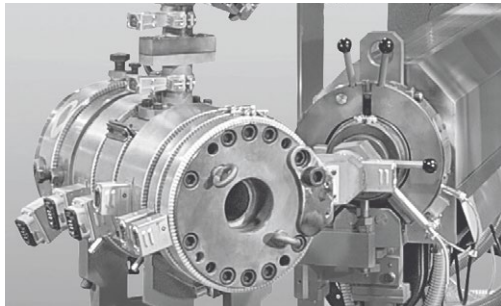
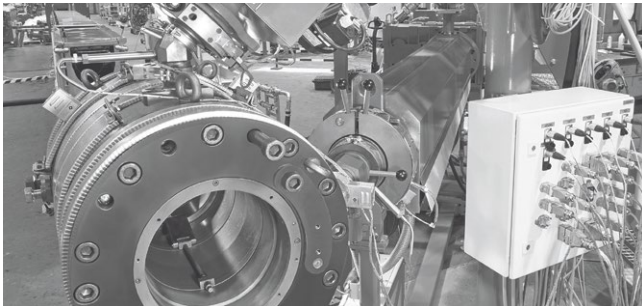
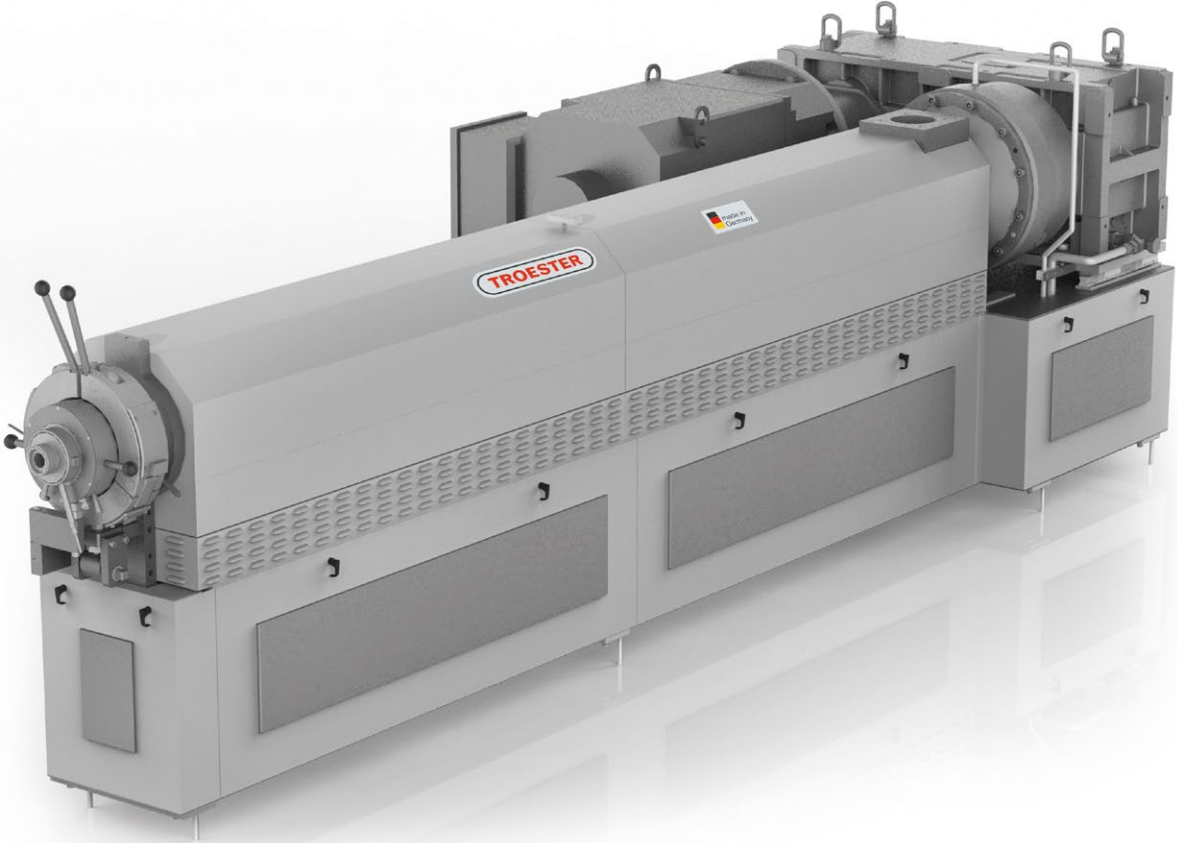


Extruders PXS for Insulation/Sheathing Lines



TROESTER

EXCELLENCE IN EXTRUSION.

Extruders PXS for Insulation/Sheathing Lines

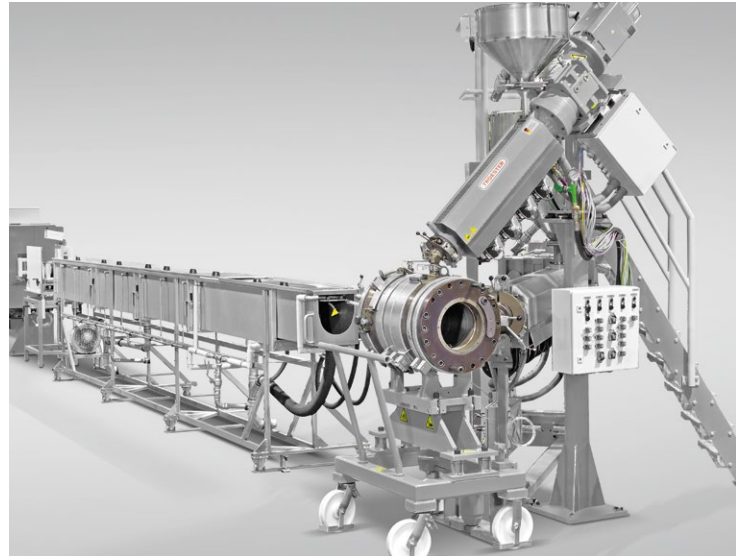
Extruder Group with Cross Head in a Sheathing Line

The new extruder series PXS is meeting the demand for high output required in sheathing and insulation processes.

The proven PX extruder series is now supplemented by a new powerful member: the PXS sheathing extruder. Increasing demand for high and stable output in sophisticated insulation and sheathing processes was the task for the TROESTER engineers to develop an extruder which perfectly meets these requirements.

Main Advantages of TROESTER Extruders PXS for Insulation/Sheathing Lines

- > High and linear output
- > Stable melt temperature
- > Homogeneous melt
- > Easy installation by rigid base frame
- > Low maintenance design for an extended service life
- > Special Extrusion Screw
- > High safety standards



Technical Data

Extruder size

screw diameters: 90, 120, 150, 175 mm
barrel lengths: 25 D

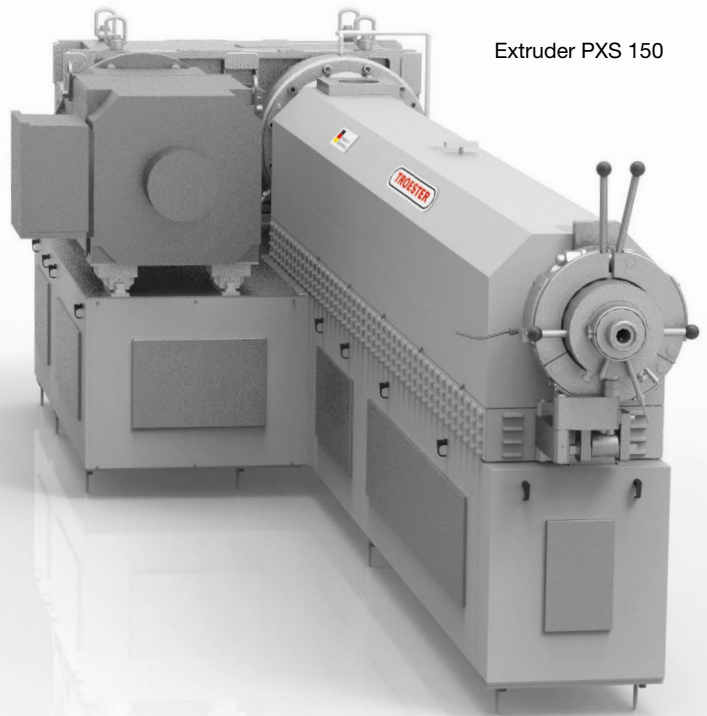
Extruder Type

- > **Type PXS** (electrical heated and air-cooled design): high-performance ceramic heater bands are fitted for electric heating, integrated cooling elements with powerful radial fans for air cooling.
- > **Type PXV** (vertical design): for skin, stripe or glue application the known extruder type PXV in vertical arrangement with fixed or movable base frame with diameters 30, 45 or 60 mm accompanies the new extruder series PXS.

Screw design

- > **Type TS**
The TROESTER TS screw with improved geometry complements the new extruder design. A round barrier flight controls the separation of granules and melt, ensuring a homogeneous, linear output as well as the gentle shearing of the material.

Extruder PXS 150



Extruder Output

Extruder	PVC Insulation	PVC Sheathing	PE
Screw diameter [mm]	Output Range [kg/h]		
90	390 – 490	520 – 650	280 – 360
120	680 – 850	900 – 1150	500 – 620
150	990 – 1200	1320 – 1600	730 – 900
175	1200 – 1500	1690 – 2000	940 – 1180